

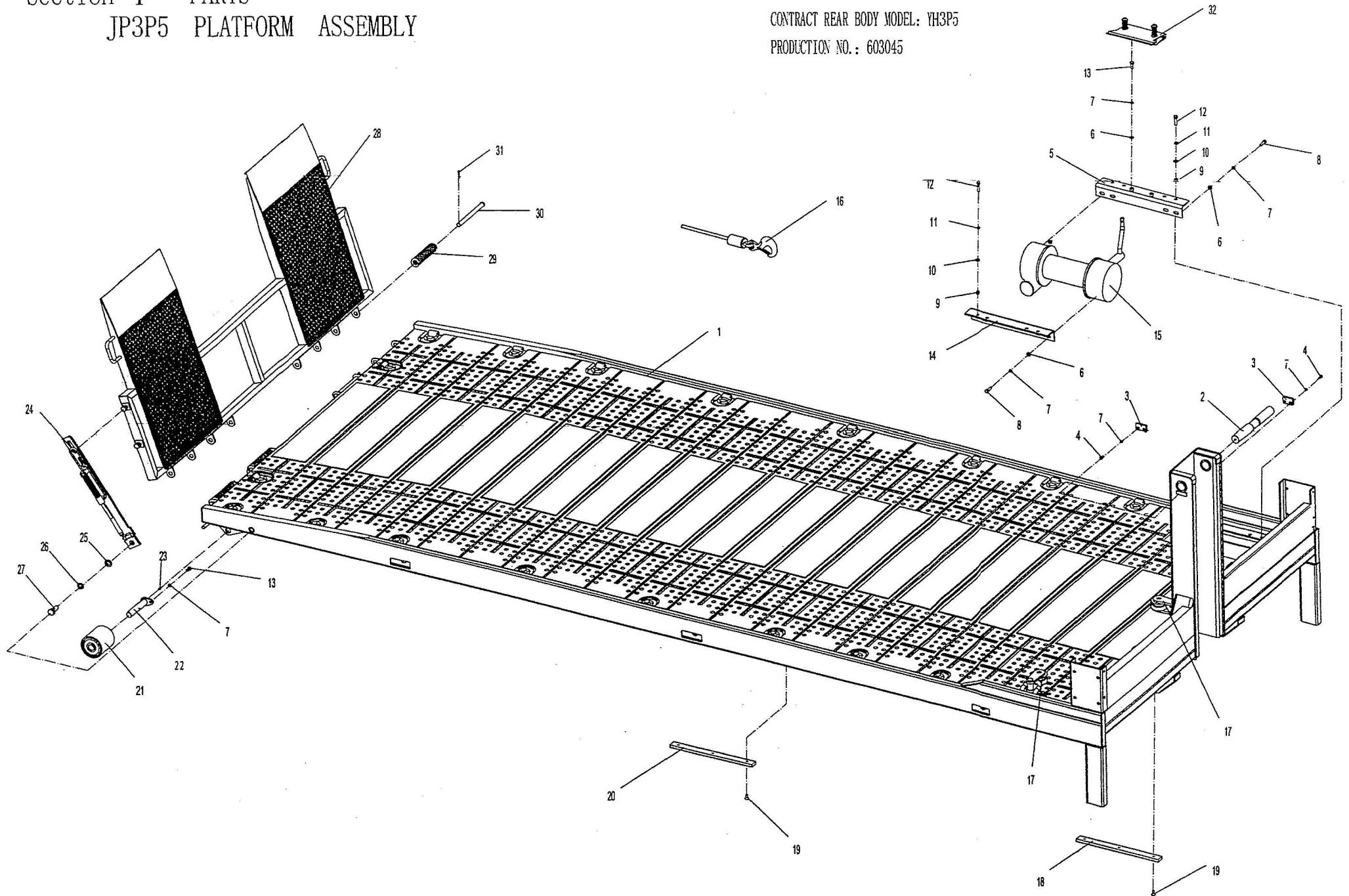


V 130

 TOWRECK

Section I - PARTS
JP3P5 PLATFORM ASSEMBLY

CONTRACT NO.: B060304
CONTRACT REAR BODY MODEL: YH3P5
PRODUCTION NO.: 603045



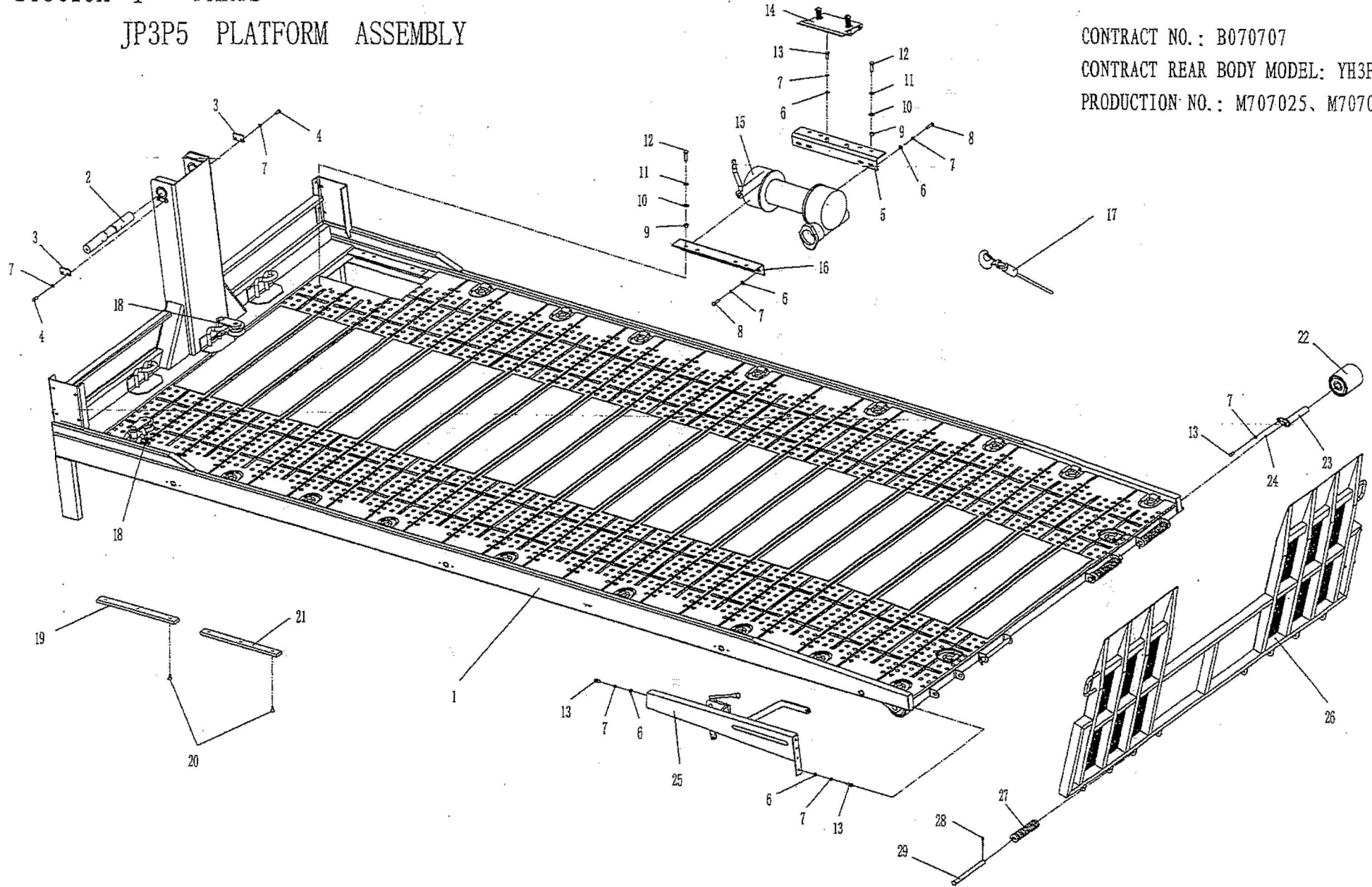
Section I - PARTS

JP3P5 PLATFORM ASSEMBLY

CONTRACT NO.: B070707

CONTRACT REAR BODY MODEL: YH3P5-3

PRODUCTION NO.: M707025, M707026



JP3P5配件价目表

第一部分 平板总成

YH3P5 平板总成

序号	代号	名称	Description	数量
1	05033017	前平板总成	FRONT PLATFORM ASSEMBLY	1
2	09035001	平板绞接轴	HINGE SHAFT, PLATFORM	1
3	05033002	卡板	LOCK PLATE	2
4	GB5783-86	六角螺栓 M10X25	SCREW M10X25	4
5	05032002	绞盘安装板 2	SCREW MOUNTING PLATE 2	1
6	GB95-86	平垫圈10	FLATWASHER 10	10
7	GB93-87	弹簧垫圈 10	LOCKWASHER 10	16
8	GB5783-86	六角螺栓 M10X40	SCREW M10X40	8
9	GB6170-86	六角螺母 M12	NUT M12	8
10	GB95-86	平垫圈 12	FLATWASHER 12	8
11	GB93-87	弹簧垫圈 12	LOCKWASHER 12	8
12	GB5783-86	六角螺栓 M12X45	SCREW M12X45	8
13	GB5783-86	六角螺栓 M10X20	SCREW M10X20	4
14	05032003	绞盘安装板 1	SCREW MOUNTING PLATE 1	1
15	JP001	四吨液压绞盘	4 TON HYDRAULIC WINH	1
16	GS001	11ZBB6X19+FC1670钢丝绳 (带钩3T)	25m CABLE ASSEMBLY	1
17	5032001	滑轮组	SWIVEL ASSEMBLY	2
18	5033003	摩擦片	BEARING PAD	2
19	GB2673-86	内六角螺钉 M8X15	BOLT M8X15	12
20	3030005	摩擦片	BEARING PAD	2
21	5033004	滚轮	ROLLER	2
22	9035002	滚轮轴	SHAFT, ROLLER	2
23	GB1152-79	油杯 M6	GREASE FITTING M6	2
24	5033005	拉紧装置	REAR PLATE TENSIONER	1
25	GB95-85	平垫圈 20	FLATWASHER 20	1
26	GB93-87	弹簧垫圈 20	LOCKWASHER 20	1
27	GB5783-86	螺栓 M20X50	SCREW M20X50	1
28	5033013	尾板总成	REAR PLATE ASSEMBLY	1
29	5033007	扭弹簧	SPRING	3
30	5033008	连结销	CONNECTING PIN	4
31	GB91-86	开口销 5X30	SPLIT-PIN 5X30	4
32	1050001	绞盘压板总成	CABLE TENSIONER	1

广东粤海汽车有限公司

JP3P5配件价目表

尾板拉紧装置

序号	代号	名称	Description	数量
6	GB95-86	平垫圈10	FLATWASHER 10	2
7	GB93-87	弹簧垫圈 10	LOCKWASHER 10	2
13	GB5783-86	六角螺栓 M10X20	SCREW M10X20	2
25	05033019	尾板拦紧装置	REAR PLATE TENSIONER	1

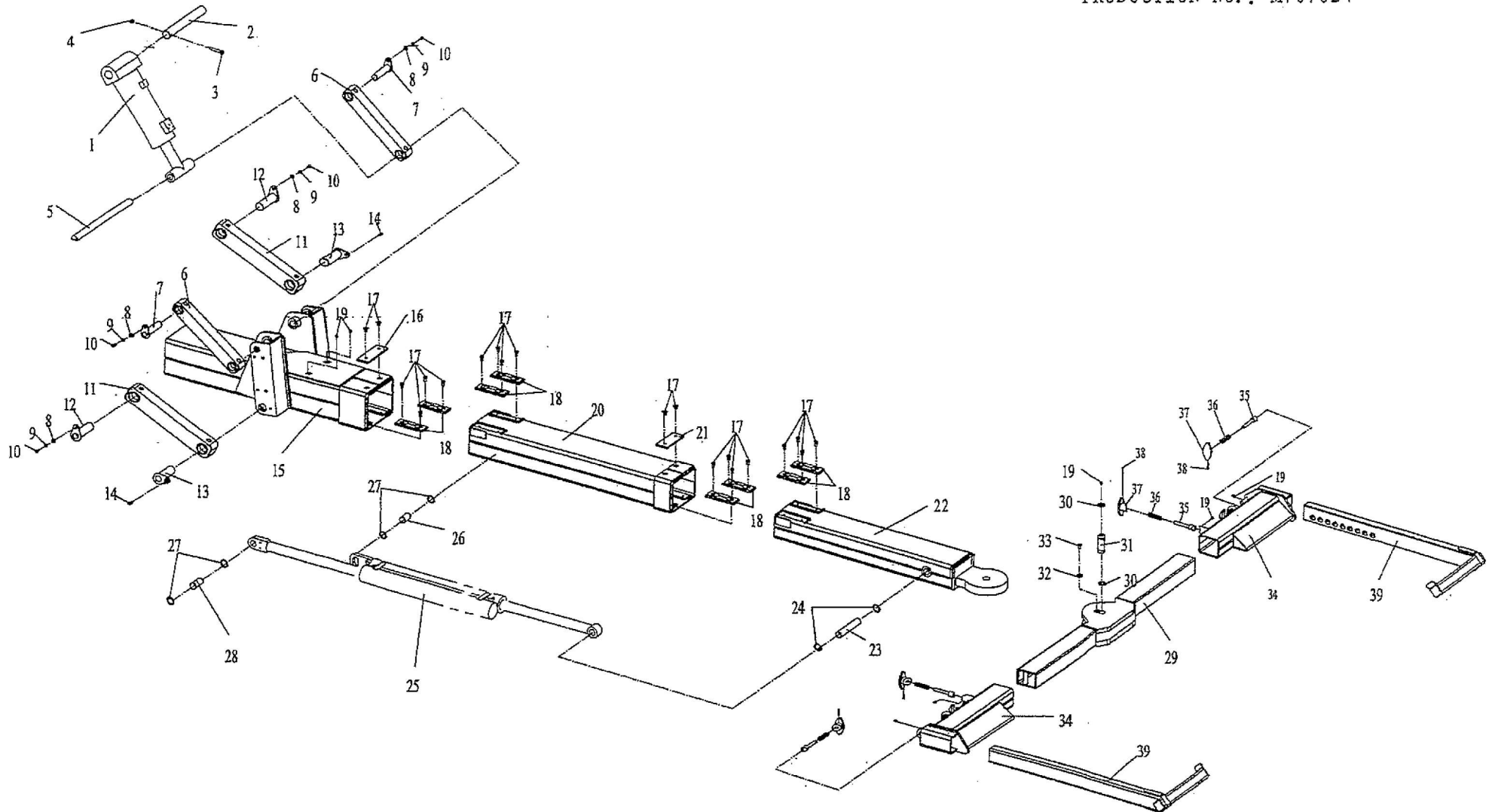
Section II - PARTS

JP3P5 UNDER-LIFT ASSEMBLY

CONTRACT NO.: B070707

CONTRACT REAR BODY MODEL: YH3P5-4

PRODUCTION NO.: M707024



广东粤海汽车有限公司

JP3P5配件价目表

第二部分 托举装置总成(四杆机构)

序号	代号	名称	Description	数量
1	L0707009-8304011	托举提升缸	UNDERLIFT LIFT CYLINDER	1
2	09032012	提升缸上销	SHAFT, LIFT CYLINDER, ROD END	1
3	GB5783-86	六角螺栓 M10X40	SCREW M10X40	1
4	GB6170-86	螺母 M10	NUT M10	1
5	09032013	提升缸下销	SHAFT, LIFT CYLINDER, BASE END	1
6	02050004	上连杆	UPPER CONNECTING ROD	2
7	09032014	上连杆前销	FRONT SHAFT, UPPER CONNECTING ROD	2
8	GB95-86	平垫圈子10	FLAT WASHER 10	4
9	GB93-87	弹簧垫圈 10	LOCKWASHER 10	4
10	GB5783-86	六角螺栓 M10X40	SCREW M10X40	4
11	02050005	下连杆	LOWER CONNECTINIG ROD	2
12	09032015	下连杆前销	FRONT SHAFT, LOWER CONNECTING ROD	2
13	09032016	下连杆后销	REAR SHAFT, LOWER CONNECTING ROD	2
14	GB2673-86	螺钉 M10X12	BOLT M10X12	2
15	02010014	托举一臂总成	OUTER UNDERLIFT WELDMENT	1
16	02010015	上限位板 1	TOP LOCK PLATE 1	1
17	GB2673-86	螺钉 M8X16	BOLT M8X16	20
18	YH/M102	平磨擦片 2	FLAT SLIDE PAD 2	8
19	GB1152-79	油杯 M6	GREASE FITTING M6	7
20	02020006	托举二臂总成	2nd UNDERLIFT WELDMENT	1
21	02020007	上限位板 2	UPPER LOCK PLATD 2	1
22	02030001	托举三臂总成	3rd UNDERLIFT WELDMENT	1
23	09032017	伸缩油缸后销	REAR SHAFT, EXTEND CYLINDER	1
24	GB893.2-86	孔用挡圈 30	SNAP RING 30, HOLE	2
25	L0707009-8304012	托举伸缩油缸	UNDERLIFT EXTEND CYLINDER	1
26	09032018	伸缩油缸中销	MIDDLE SHAFT, EXTEND CYLINDER	1
27	GB893.2-86	孔用挡圈 30	SNAP RING 30, HOLE	4
28	09032019	伸缩缸前销	FRONT SHAFT, EXTEND CYLINDER	1
29	十字臂及抱胎机构部分与3P5标准板相同			

第三部分 JP3P5副车架总成(四杆机构)

YH3P5 副车架

序号	代号	名称	Description	数量
1	03030017	副车架焊接总成	SUB-FRAME ASSEMBLY	1

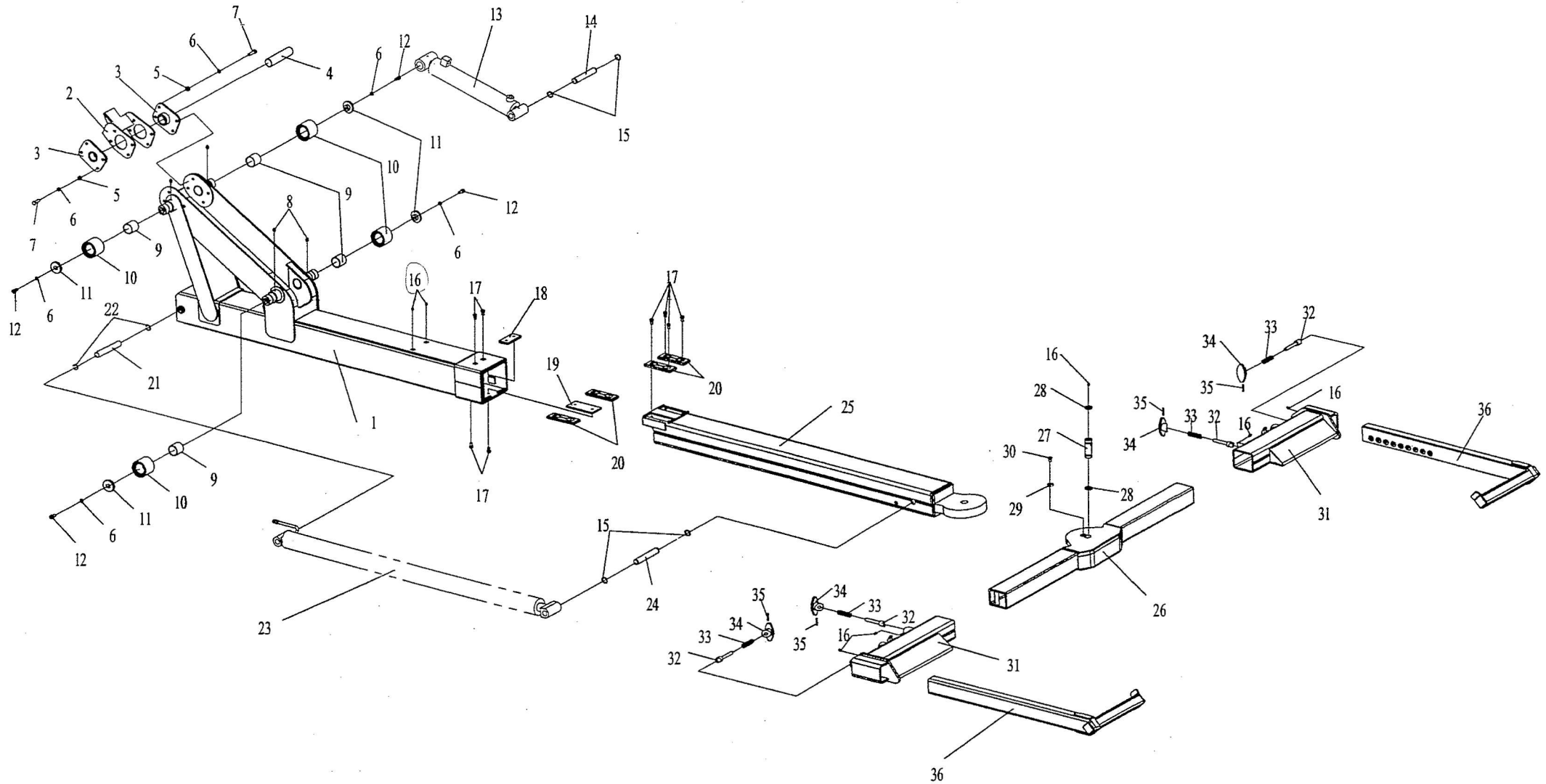
Section II - PARTS

JP3P5 UNDER-LIFT ASSEMBLY

CONTRACT NO.: B060304

CONTRACT REAR BODY MODEL: YH3P5

PRODUCTION NO.: 603045



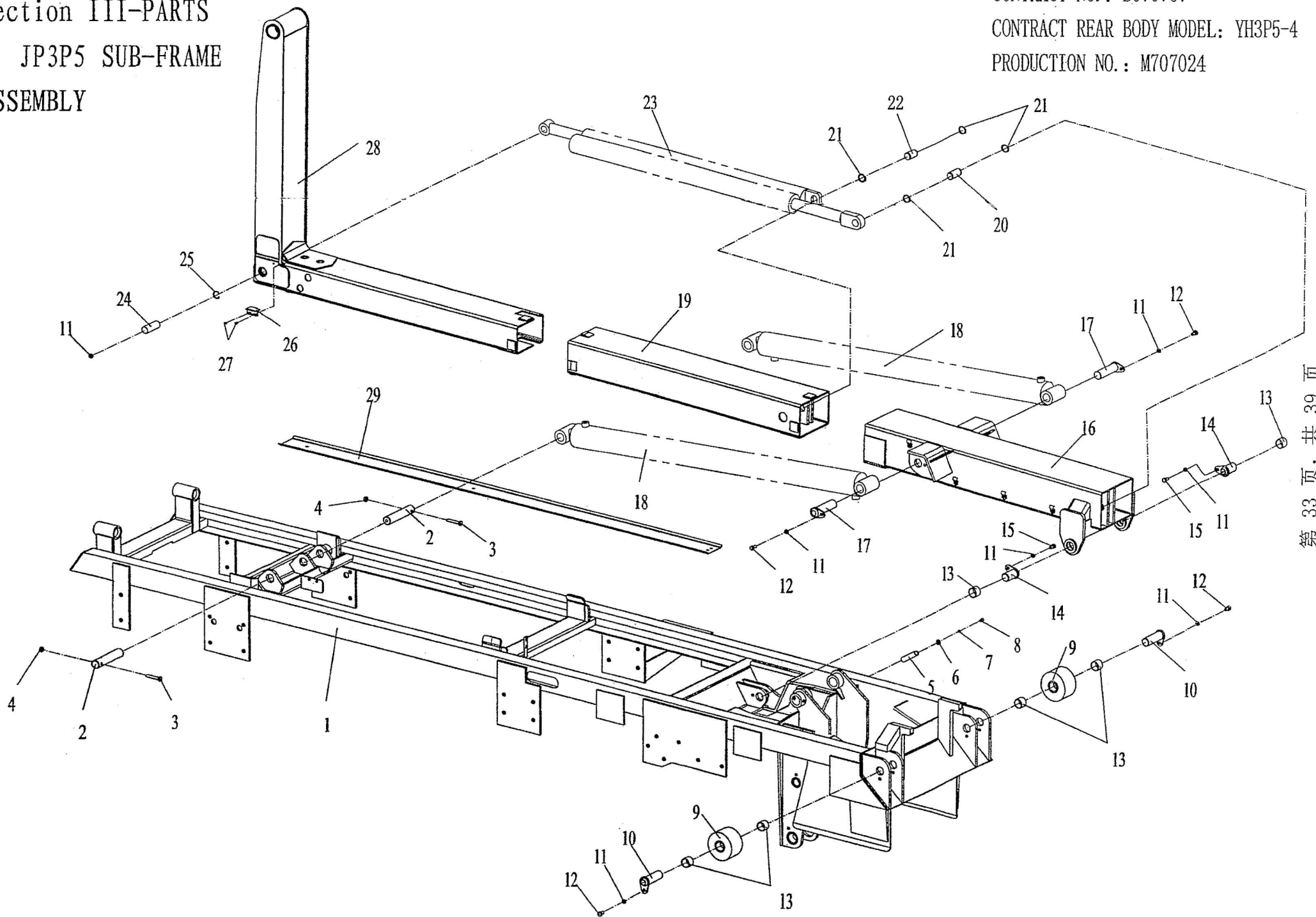
第二部分 托举装置总成

YH3P5 托举装置

序号	代号	名称	Description	数量
1	02010008	托举一臂总成	OUTER UNDERLIFT WELDMENT	1
2	02010009	限位装置	STOP DEVICE	1
3	02010010	油缸上销座	TOP BRACKET, UNDERLIFT LIFT CYLINDER	2
4	09032240	油缸上销轴	SHAFT, LIFT CYLINDER, ROD END	1
5	GB6170-86	螺母 M10	NUT M10	8
6	GB93-87	弹簧垫圈 10	LOCKWASHER 10	12
7	GB5783-86	螺栓 M10X40	SCREW M10X40	8
8	GB1152-79	油杯 M8X1	GREASE FITTING M8X1	4
9	SF-2-4550	含油轴承套	BEARING BUSHING	4
10	02010011	滚轮	ROLLER	4
11	02010012	挡块	STOP PLATE	4
12	GB70-85	内六角圆柱螺钉 M10X20 (全螺纹)	BOLT M10X20	4
13	10010017	托臂提升缸	UNDERLIFT LIFT CYLINDER	1
14	09032011	油缸下销轴	SHAFT, LIFT CYLINDER, BASE END	1
15	GB894.2-86	轴用挡圈 25	SNAP RING 25, SHAFT	4
16	GB1152-79	油杯 M6	GREASE FITTING M6	7
17	GB2673-86	螺钉 M18X16	BOLT M8X16	8
18	02010002	上限位块	TOP LOCK PLATE	1
19	02010003	摩擦片限位板	LOCK PLATE, SLIDE PAD	1
20	YH/M102	平摩擦片 2	FLAT SLIDE PAD 2	4
21	09032002	托臂伸缩油缸前销	SHAFT, EXTENSION CYLINDER, FRONT END	1
22	GB893.2-86	孔用挡圈 25	SNAP RING 25, HOLE	2
23	10010016	托臂伸缩缸	UNDERLIFT EXTENSION CYLINDER	1
24	09032003	托臂伸缩油缸后销	SHAFT, EXTENSION CYLINDER, REAR END	1
25	02020003	托举二臂总成	INNER UNDERLIFT WELDMENT	1
26	JP80SB-9901000	十字臂焊接总成	CROSSBAR WELDMENT	1
27	80SBA-9900012	十字臂销轴	PIVOT PIN, CROSSBAR	1
28	ZBJ22 002-88	O形圈 35502500	O RING 35502500	2
29	80SBA-9900011	止动垫圈	LOCKWASHER	1
30	GB819-85	螺钉 M10X14	BOLT M10X14	1
31	12063004	十字臂套	WHEEL GRID 1	2
32	YH/X003	插销	PIN	4
33	YH/H001	压缩弹簧 1	COMPRESSION SPRING 1	4
34	YH/Q001	手柄	SLIDE LOCK HANDLE KNOB	4
35	GB119-86	销 A4X35	PIN A4X35	4
36	12063005	L型轮胎托架	L TYPE WHEEL RETAINER	2

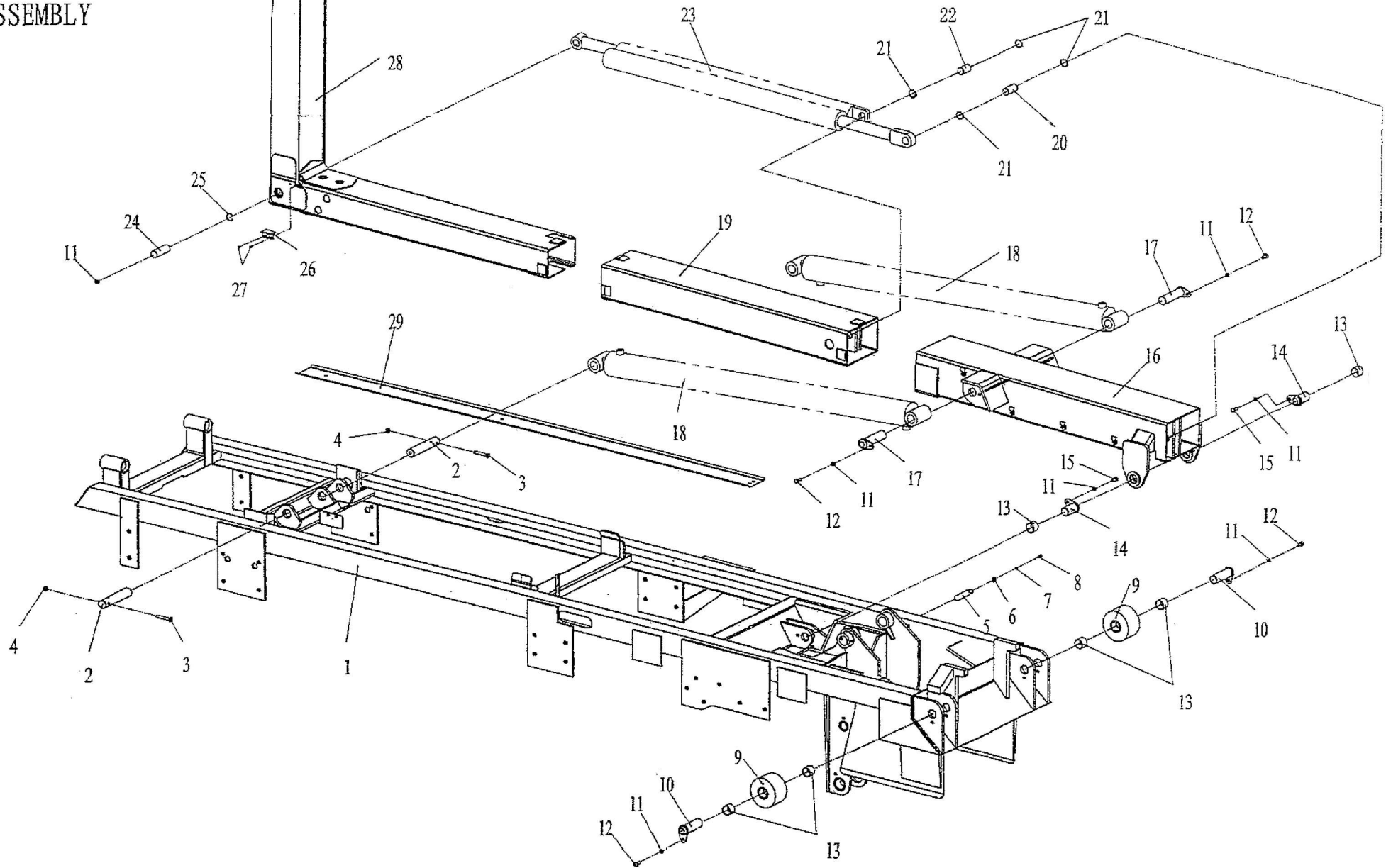
Section III-PARTS
JP3P5 SUB-FRAME
ASSEMBLY

CONTRACT NO.: B070707
CONTRACT REAR BODY MODEL: YH3P5-4
PRODUCTION NO.: M707024



Section III-PARTS
JP3P5 SUB-FRAME
ASSEMBLY

CONTRACT NO. : B070707
CONTRACT REAR BODY MODEL: YH3P5-4
PRODUCTION NO. : M707024

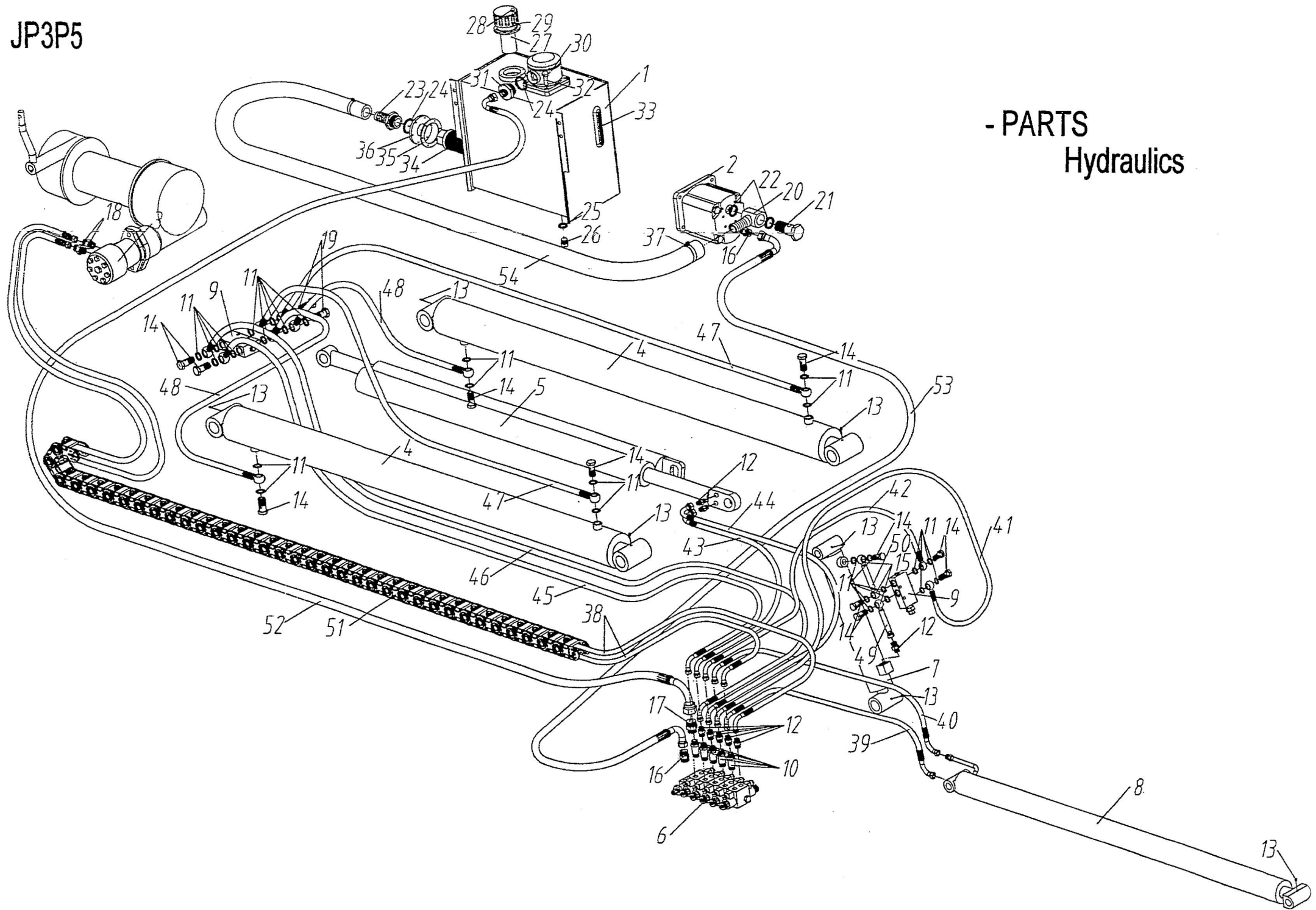


第三部分 JP3P5副车架总成(导轨式)

YH3P5 副车架

序号	代号	名称	Description	数量
1	03030015	副车架焊接总成	SUB-FRAME ASSEMBLY	1
2	09033001	倾斜缸下销	SHAFT, TILT CYLINDER, BASE END	2
3	GB5783-86	六角螺栓 M10X65	SCREW M10X65	2
4	GB6170-86	螺母 M10	NUT M10	2
5	03030007	滚套	ROLLER BUSHING	1
6	GB95-85	平垫圈 6	FLATWASHER 6	1
7	GB93-87	弹簧垫圈 6	LOCKWASHER 6	1
8	GB5793-86	六角螺栓 M6X15	SCREW M6X15	1
9	03030008	尾滚轮组	REAR ROLLER ASSEMBLY	2
10	09033002	尾滚轮销	SHAFT, REAR ROLLER	2
11	GB93-87	弹簧垫圈 10	LOCKWASHER 10	7
12	GB5783-86	六角螺栓 M10X13	SCREW M10X13	4
13	SF-2-3530	含油轴承套	BEARING BUSHING	2
14	09033003	摆臂联结销	CONNECTING PIN, SWING ARM	2
15	GB5783-86	六角螺栓 M10X20	SCREW M10X20	2
16	03030009	摆臂一臂总成	1ST SWING ARM	1
17	09033004	倾斜缸上销	SHAFT, TILT CYLINDER, ROD END	2
18	10010019	摆臂倾斜油缸	SWING ARM TILT CYLINDER	2
19	03030010	摆臂二臂总成	2ND SWING ARM	1
20	09033005	伸缩缸后销	SHAFT, EXTEND CYLINDER, REAR END	1
21	GB894.1-86	轴用挡圈 30	SHAP RING 30, SHAFT	4
22	09033006	伸缩缸中销	SHAFT, EXTEND CYLINDER, MIDDLE END	1
23	10010018	摆臂伸缩油缸	SWING ARM EXTENR CYLINDER	1
24	09033007	伸缩缸前销	SHAFT, EXTEND CYLINDER, FRONT END	1
25	GB893.1-86	弹性挡圈 30	SNAP RING 30	1
26	03030011	磁铁固定板	FIXING PLATE, MAGNET	1
27	GB819-85	沉头螺钉 M4X8	BOLT M4X8	2
28	03030012	摆臂三臂总成	3RD SWING ARM	1
29	03030013	链条托板	CHAIN TRAY	1

JP3P5



- PARTS
Hydraulics

35	YH/Y111	法兰	FLANGE	1
36	YH/Y105	垫圈	WASHER	1
37	Q67650	卡箍	HOSE CLAMP	2
38		胶管总成8 II 5000-C2 (505/512)	HOSE 8 II 5000-C2 (505/512)	2
39		胶管总成8 II 3550-C (505/505)	HOSE 8 II 3550-C (505/505)	1
40		胶管总成8 II 3650-C (505/505)	HOSE 8 II 3650-C (505/505)	1
41		胶管总成8 II 2850-E (501/505)	HOSE 8 II 2850-E (501/505)	1
42		胶管总成8 II 2800-E (501/505)	HOSE 8 II 2800-E (501/505)	1
43		胶管总成8 II 2350-C2 (505/505)	HOSE 8 II 2350-C2 (505/505)	1
44		胶管总成8 II 3550-C (505/505)	HOSE 8 II 2350-C2 (505/505) 8 II 3550-C (505/505)	1
45		胶管总成8 II 3150-E (501/505)	HOSE 8 II 3150-E (501/505)	1
46		胶管总成8 II 3150-E (501/505)	HOSE 8 II 3150-E (501/505)	1
47		胶管总成8 II 1500-F (501/501)	HOSE 8 II 1500-F (501/501)	1
48		胶管总成8 II 750-F (501/501)	HOSE 8 II 750-F (501/501)	1
49		无缝钢管 L=50	SEAMLESS PIPE L=50	1
50		无缝钢管 L=250	SEAMLESS PIPE L=250	1
51	YQ005	胶管拖链 25X50TKD	CHAIN 25X50TKD	1
52		胶管总成 16 II 3800-C (509/509)	HOSE 16 II 3800-C (509/509)	1
53		胶管总成12 II 4500-C (507/507)	HOSE 12 II 4500-C (507/507)	1
54		低压胶管 25-2000	HOSE LOW PRESSURE 25-2000	1

第四部分 零件-液压

序号	代号	名称	Description	数量
1	YH40YX	液压油箱总成	HYDRAULIC OIL RESERVOIR	1
2	YB001	齿轮泵CBNzq-F532-BLHL	GEAR PUMP	1
3	YM001	绞盘油马达 OMR100	WINCH MOTOR OMR100	1
4	10010019	摆臂倾斜油缸 $\Phi 80/\Phi 50 \times 1340 \times 1550$	SWING ARM TILT CYLINDER	2
5	10010018	摆臂伸缩油缸 $\Phi 63/\Phi 45-965 \times 2$	SWING ARM EXTEND CYLINDER	1
6	STLCTE0503-05-016	五联电磁多路阀	SOLENOID CONTROL VALVE, 5 SPOOL	1
7	10010028	托臂升降油缸 $\Phi 63/\Phi 40 \times 330 \times 540$	NUDERLIFT LIFT CYLINDER	1
8	10010118	托臂伸缩缸 $\Phi 63/\Phi 40 \times 1340 \times 1550$	UNDERLIFT EXTEND CYLINDER	1
9	YF202	平衡阀 08.45.16.03.02.35	BALANCE VALVE 08.45.16.03.02.35	2
10	YJ050	过度加长接头 G3/8/M16X1.5	LENGTHEN CONNECTOR ADAPTER G3/8/M16X1.5	5
11	JB982-77	垫圈3/8	WASHER 3/8	5
12	YJ003	直通接头G3/8/M16X1.5	CONNECTOR G3/8/M16X1.5	20
13	JBT1940.1-1995	油杯M6	GREASE FITTING M6	3
14	YJ002	绞接螺栓3/8	HINGE SCREW 3/8	1
15	YJ061	焊接式绞接接头体G3/8	HINGE CONNECTOR WELDMENT G3/8	1
16	YJ010	直通接头G1/2/M22X1.5	CONNECTOR G1/2/M22X1.5	1
17	YJ006	直通接头G1/2/M26X1.5	CONNECTOR G1/2/M26X1.5	1
18	YJ004	直通接头G1/2/M16X1.5	CONNECTOR G1/2/M16X1.5	1
19	YJ051	过度加长绞接接头G3/8	LENGTHEN HINGE CONNECTOR ADAPTER G3/8	1
20		33 绞接体	HINGED 33	1
21		33 绞接螺栓	HINGE SCREW 33	1
22	JB982-77	组合垫 33	WASHER 33	2
23	YH/JX014	直通接头	CONNECTOR	1
24	JB982-77	垫圈 48	WASHER 48	2
25	JB982-77	垫圈 16	WASHER 16	1
26	JB1000-77	外六角螺塞 M16X1.5	SCREW PULG M16X1.5	1
27	YL005	QUQ2空滤器	AIR FIL TER QUQ2	1
28	GB67-85	螺钉 M4X12	BOLT M4X12	6
29	GB95-85	平垫 4	PLATWASHER 4	6
30	YL003	LHN-100X20L 回油滤油	RETURN-LINE FIL TER LHN-100X20L	1
31	YH/J083	法兰	CONNECTOR	1
32	GB70-85	垫圈	SCREW M8X25	4
33	LS-7"	液位计	OIL LEVEL INDICATOR	1
34	YL002	吸油滤油器WU-160X100	OUTLET FIL TER WU- 160X100	1